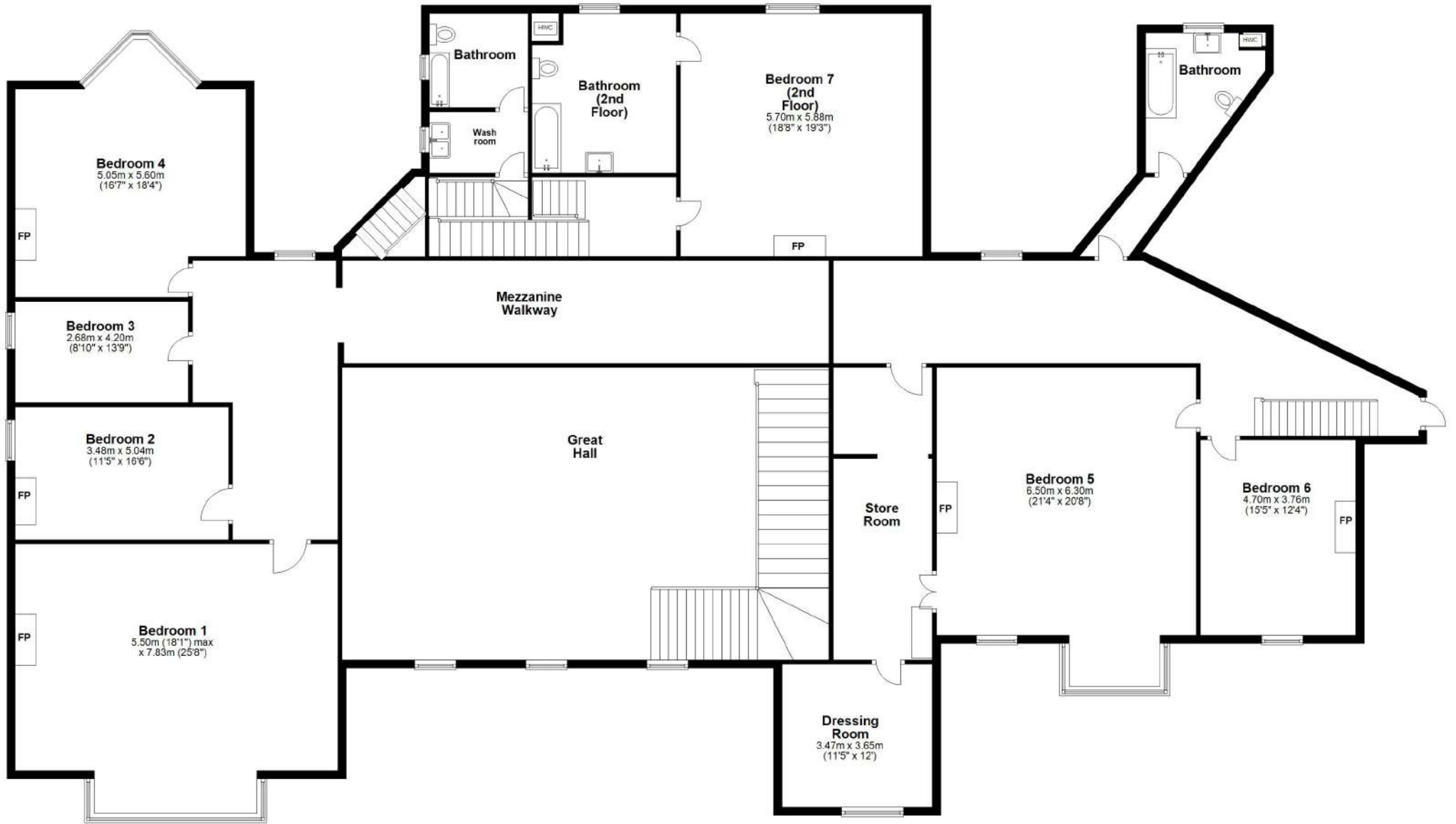




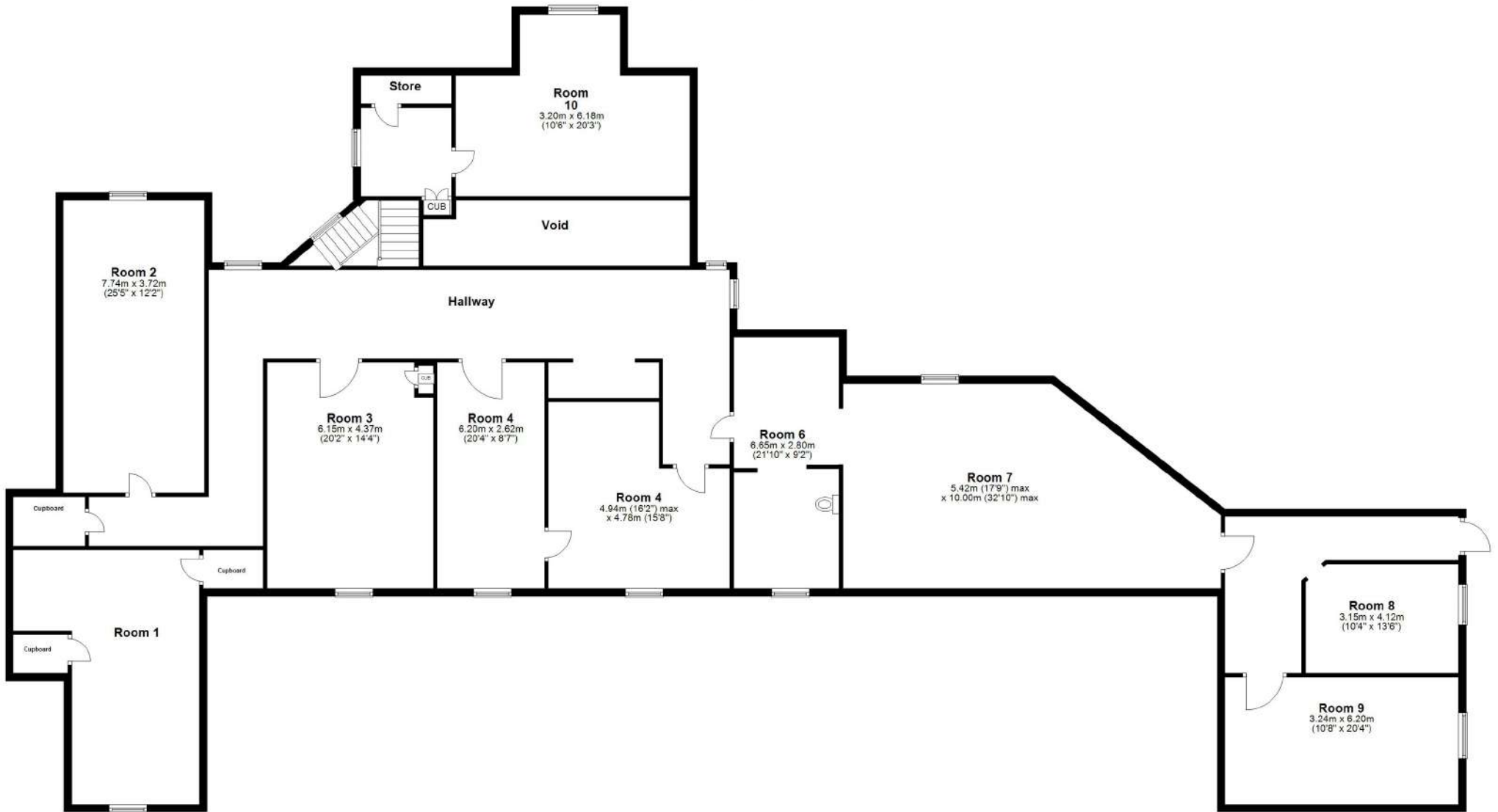
**First Floor**

Approx. 454.5 sq. metres (4892.6 sq. feet)



Total area: approx. 454.5 sq. metres (4892.6 sq. feet)

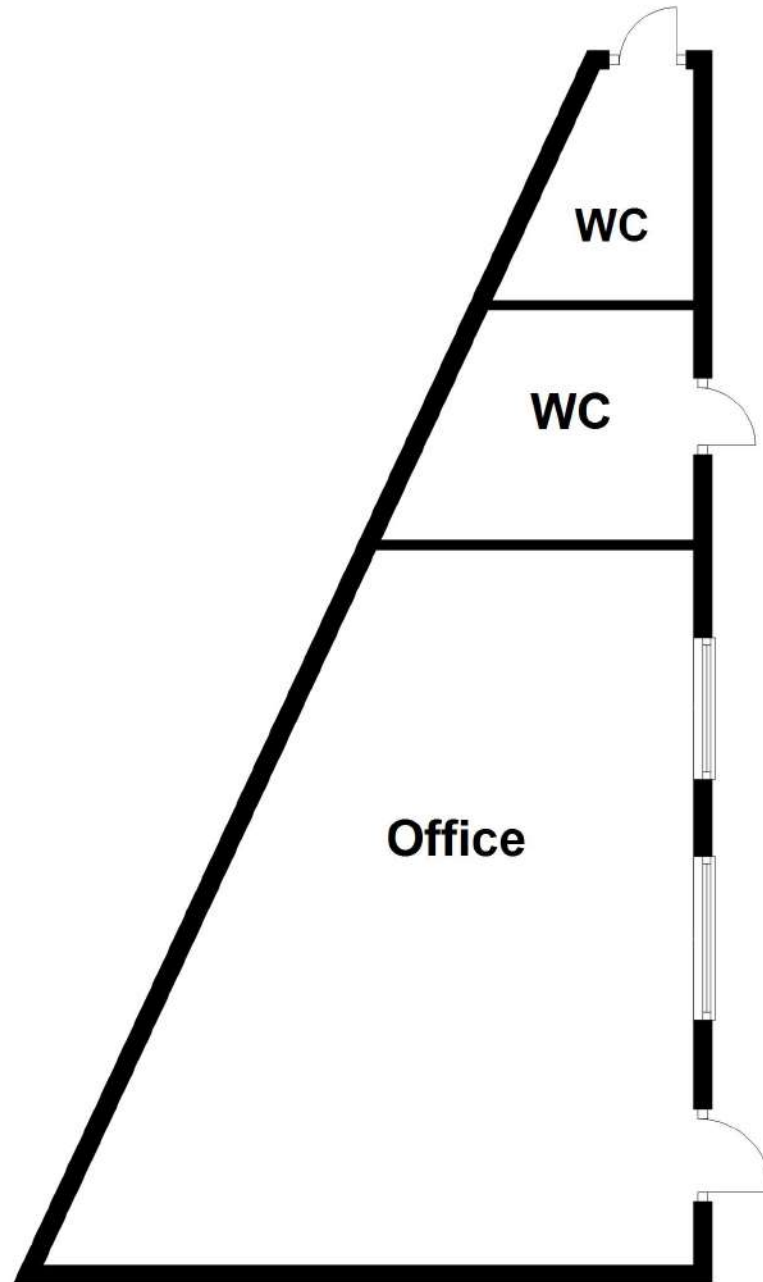
**Attic Rooms**  
Approx. 345.3 sq. metres (3717.1 sq. feet)



Total area: approx. 345.3 sq. metres (3717.1 sq. feet)

# Office Building

Approx. 48.6 sq. metres (523.2 sq. feet)



Total area: approx. 48.6 sq. metres (523.2 sq. feet)