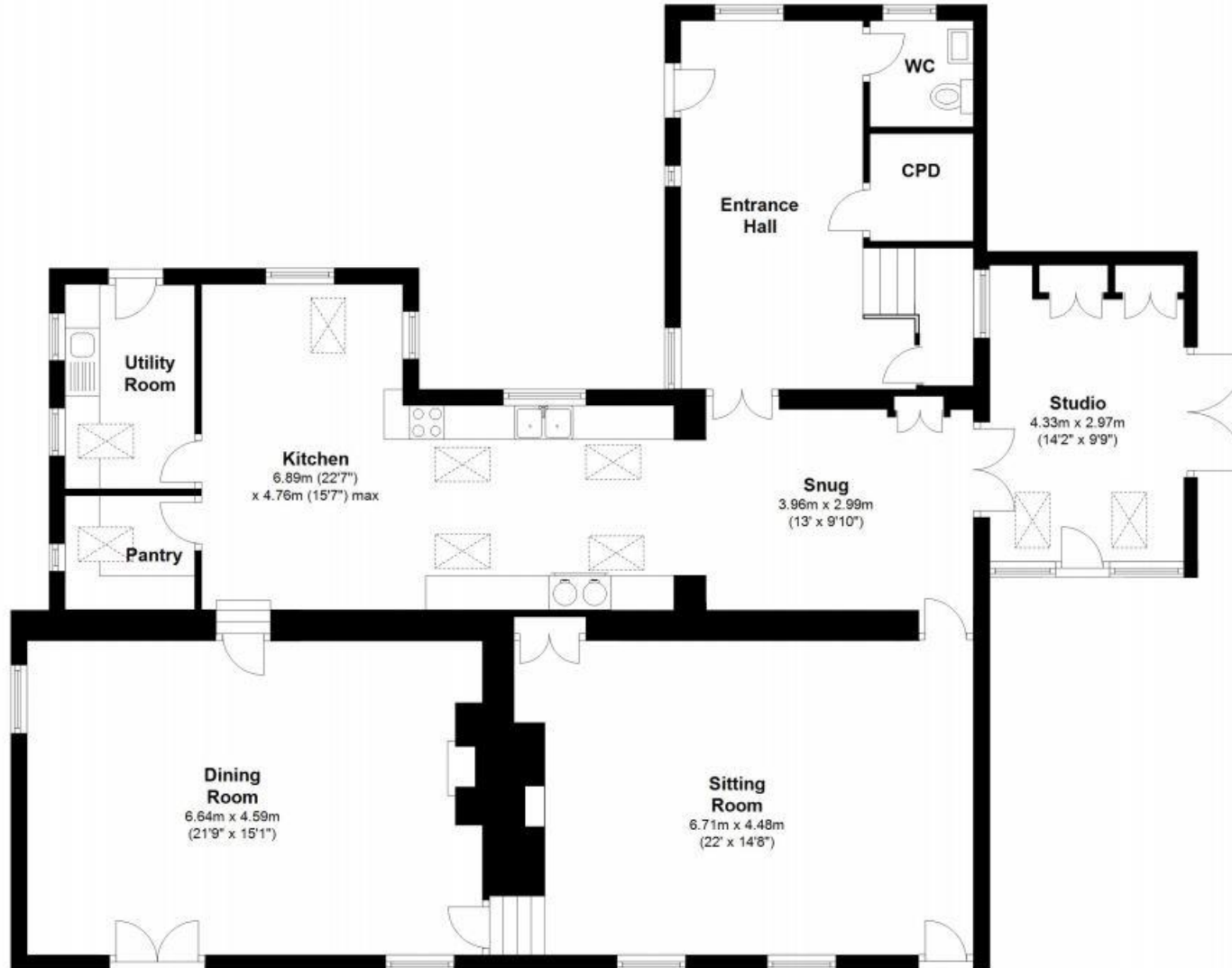


Appletrees, Sandhoe, Northumberland, NE46 4LU

Total area: approx. 258.2 sq. metres (2779.2 sq. feet)

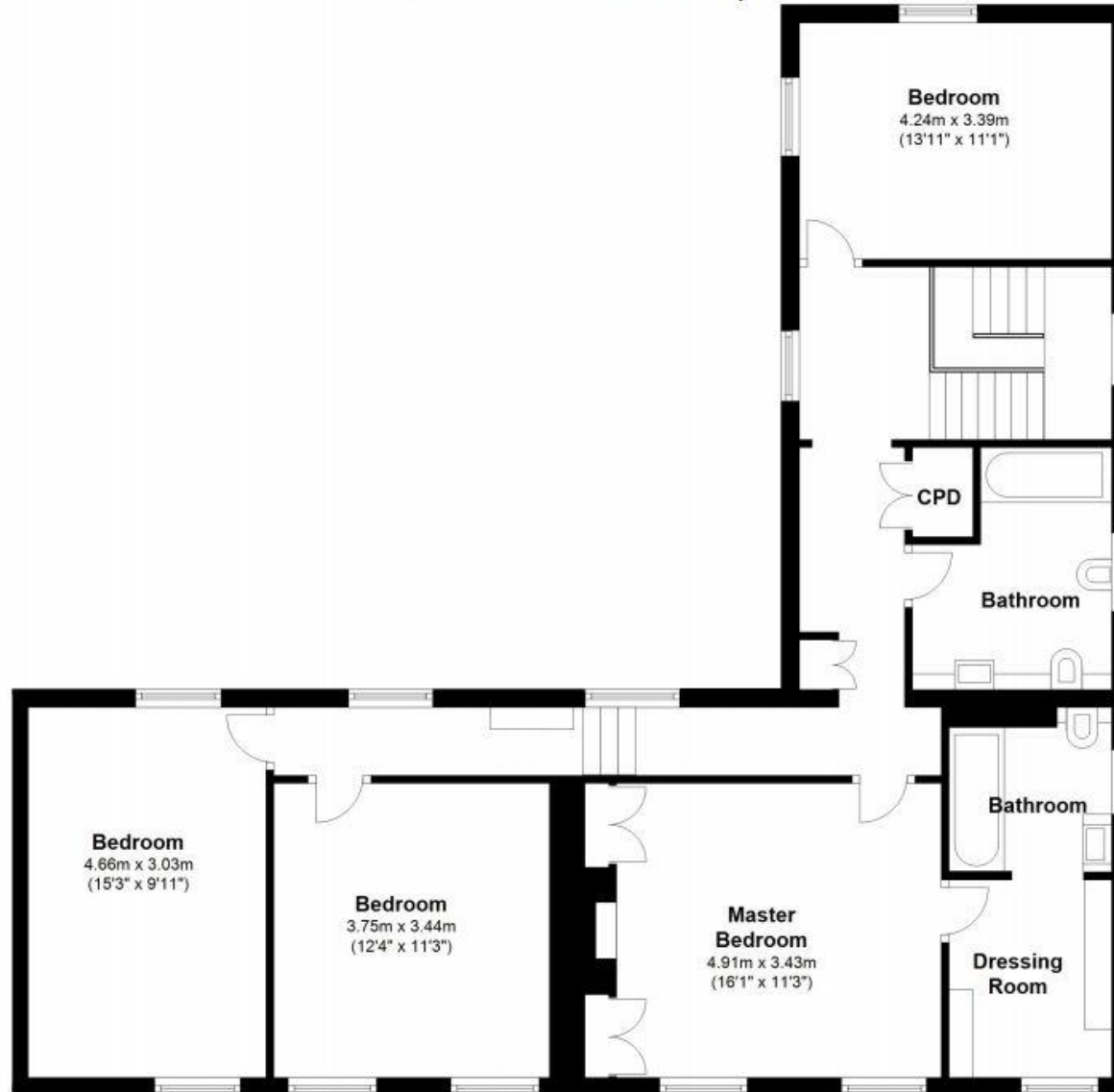
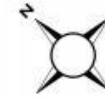
Not to scale. For identification only



Appletrees, Sandhoe, Northumberland, NE46 4LU

Total area: approx. 258.2 sq. metres (2779.2 sq. feet)

Not to scale. For identification only



Bedroom
4.24m x 3.39m
(13'11" x 11'1")

CPD

Bathroom

Bathroom

Dressing
Room

Bedroom
4.66m x 3.03m
(15'3" x 9'11")

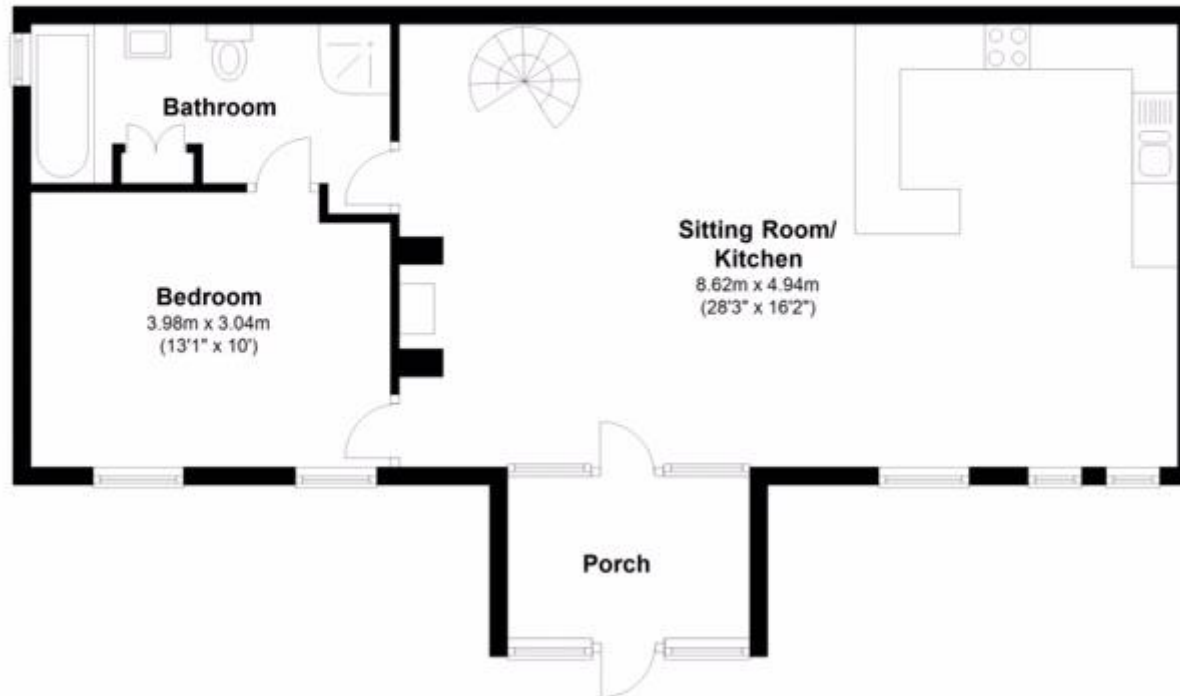
Bedroom
3.75m x 3.44m
(12'4" x 11'3")

**Master
Bedroom**
4.91m x 3.43m
(16'1" x 11'3")

Peartree Cottage, Sandhoe, Northumberland, NE46 4LU

Total area: approx. 130.0 sq. metres (1399.3 sq. feet)

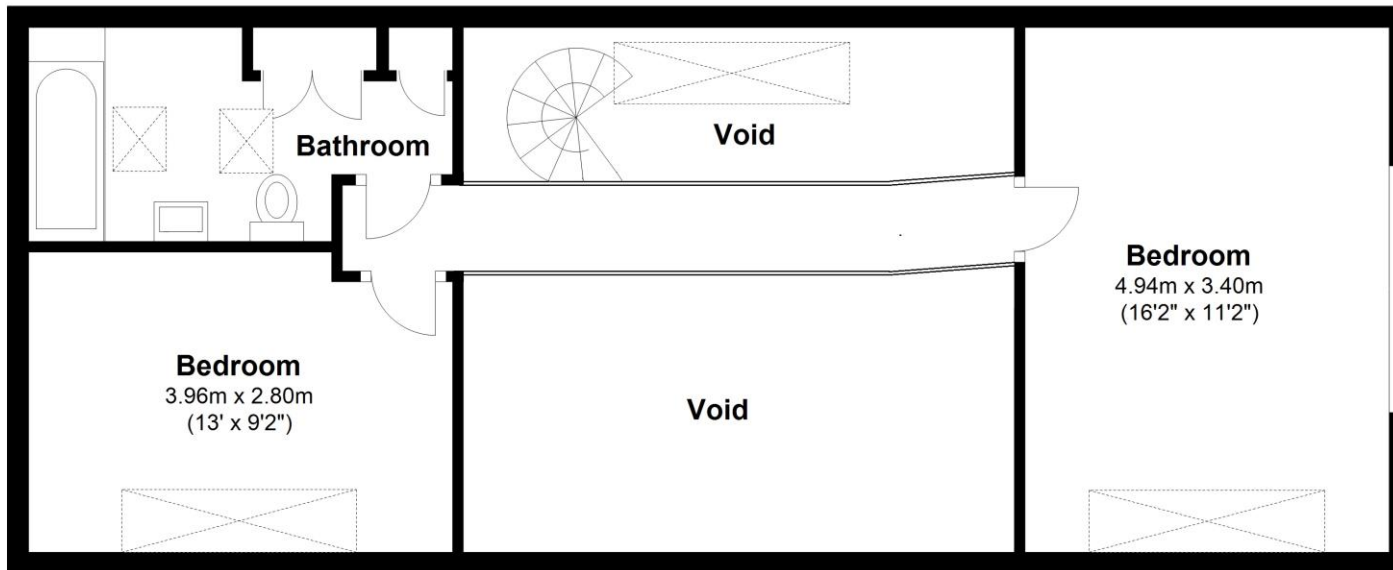
Not to scale. For identification only



Peartree Cottage, Sandhoe, Northumberland, NE46 4LU

Total area: approx. 130.0 sq. metres (1399.3 sq. feet)

Not to scale. For identification only



Bedroom
3.96m x 2.80m
(13' x 9'2")

Bathroom

Void

Void

Bedroom
4.94m x 3.40m
(16'2" x 11'2")